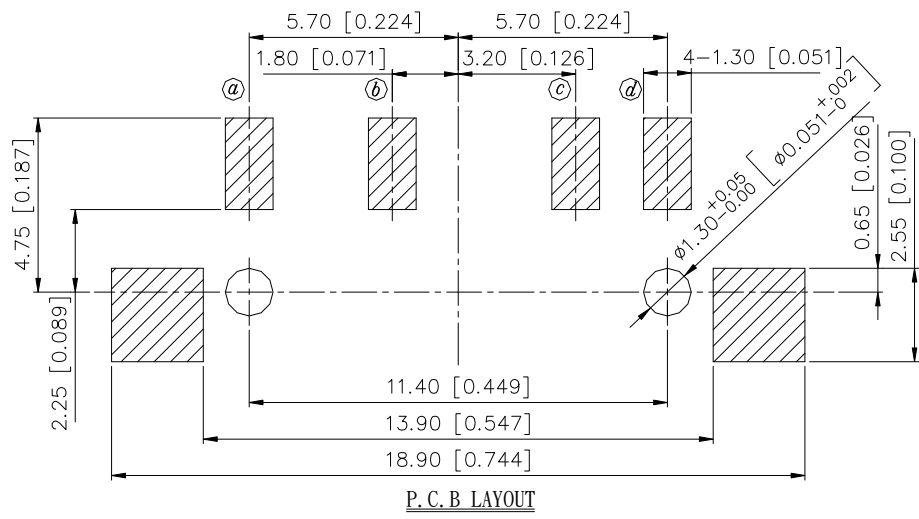
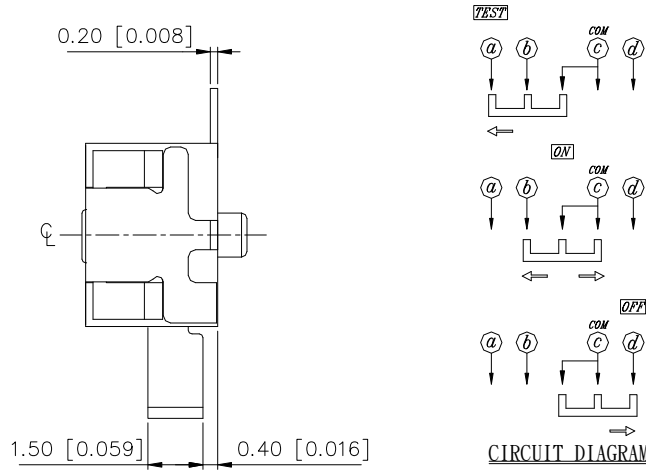
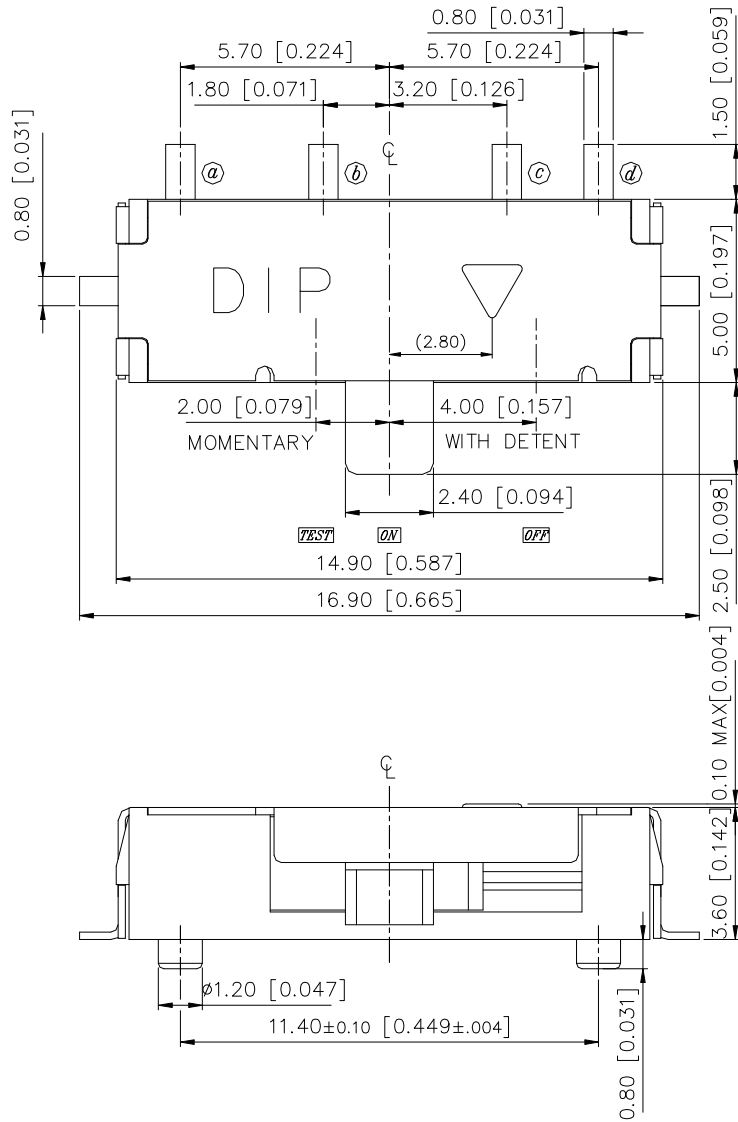


NSS SERIES



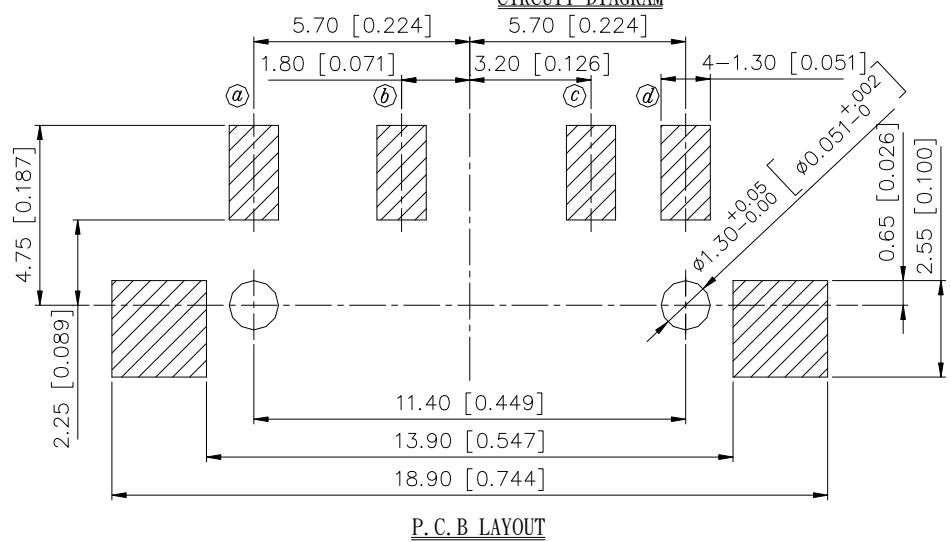
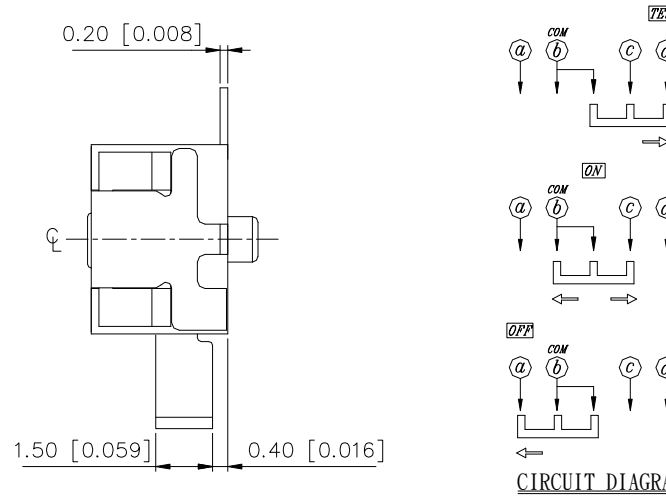
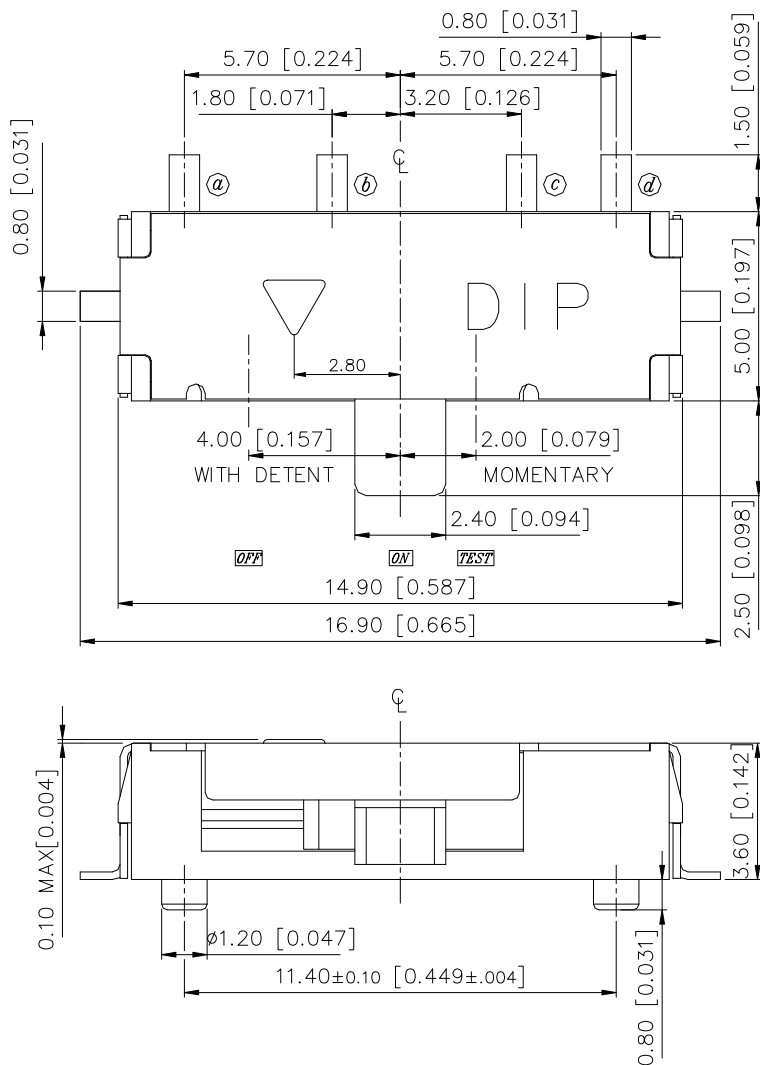
DIMENSION

NSS13-LC



General Tolerance : $\pm 0.2\text{mm}$

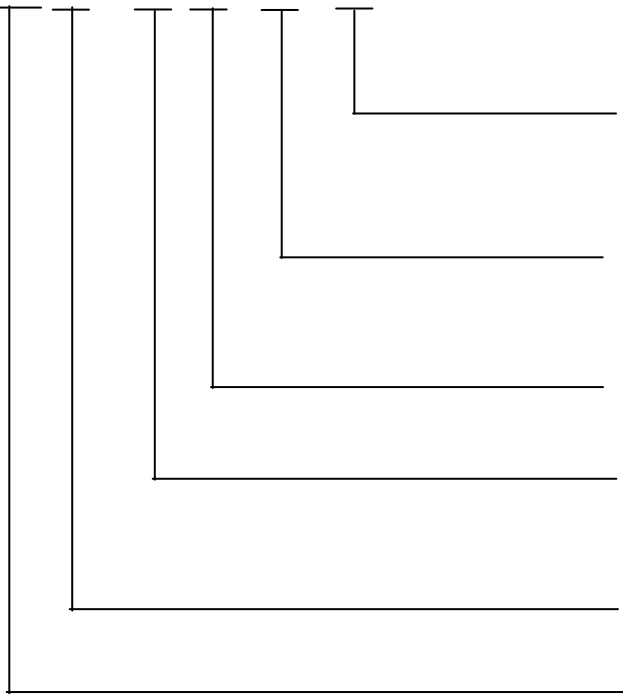
NSS13-RC



General Tolerance : $\pm 0.2\text{mm}$

HOW TO ORDER

NSS 13 - □ □ - V - □



Package :
T/R = Tape & Reel

Soldering :
V = RoHS & Lead Free Solderable

C=With Post

L =Left
R =Right

13 = 1P3T

Slide Switch

SPECIFICATION

△MECHANICAL

Operation Force : ON-OFF~500+100/-200gf
OFF-ON~320±150gf
ON-TEST~320±150gf

Stroke: ON-OFF 4mm
OFF-ON 4mm
ON-TEST 2mm

Operation Temperature Range : -20°C to +70°C

Storage Temperature Range : -40°C to +85°C

△ELECTRICAL

Electrical Life : 10,000 cycles

Rating : 0.3A, 4V DC

Contact Resistance : 100mΩ max.

Insulation Resistance : 100MΩ min. at 500V DC

Dielectric Strength : 500V AC/1 minute

Circuit : 1P3T

MATERIAL

△STEM : NYLON UL94V-0 High-Temp Thermoplastic

Color : Black

△COVER : Nickel silver

△SPRING : Stainless silver

△CONTACT : Alloy Copper, Gold Plated

△BASE : NYLON High-Temp Thermoplastic

Color : Black

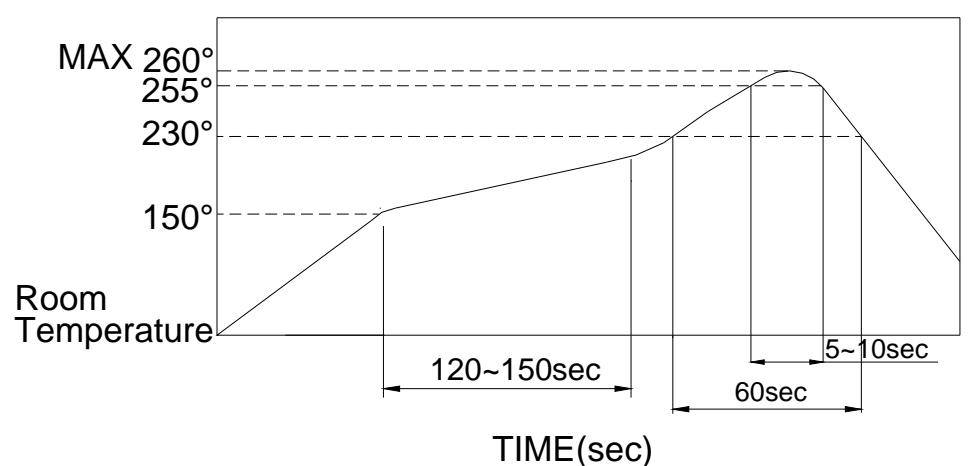
△TERMINAL : Phosphor Bronze, with Silver plating

SOLDERING PROCESS

△HAND SOLDERING : Use a soldering iron of 30 watts,
Controlled at 350°C approximately 5 seconds while
applying solder.

△REFLOW SOLDERING : When applying reflow soldering,
the peak temperature of the reflow oven should be set
to 260°C max.

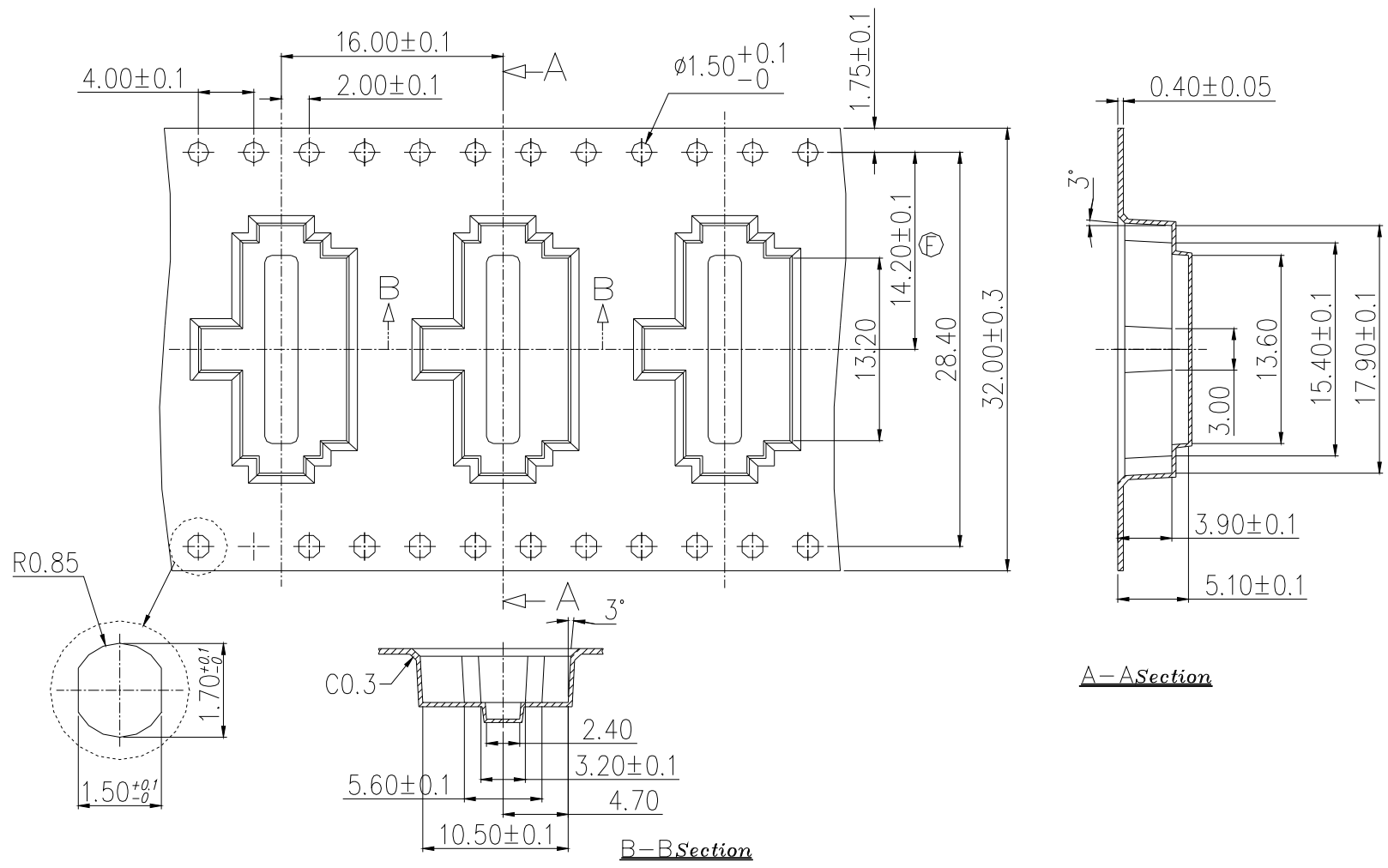
△Temperature Profile :



PACKING

REEL

Part Number	Number Per Tube	Number Per Reel
NSS13-LC	-	800
NSS13-RC	-	800



A-A Section

B-B Section

General Tolerance : ± 0.1 mm